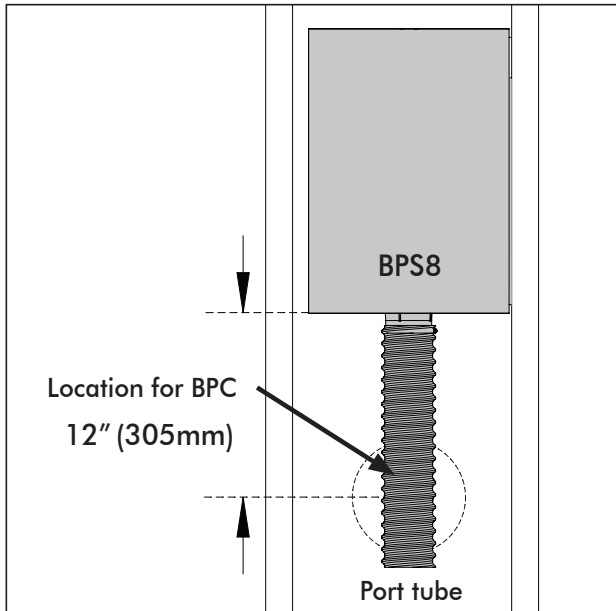


VISUAL PERFORMANCE[®]

VPBPC4R & VPBPC6R QUICKSTART GUIDE

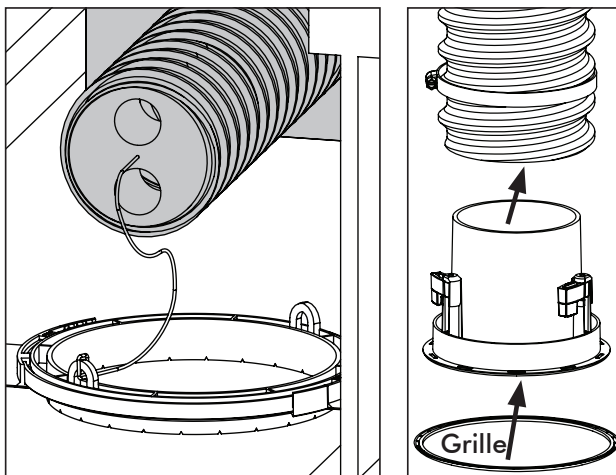


Installation Without Flex Bracket

1. Position the cutout template at BPS8 port tube location, then pencil an outline on the ceiling.

NOTE: 12" rule on diagram. This ensures that there is ample hose length available in the ceiling for band Pass connector installation.

2. Cut the mounting hole using a keyhole or drywall saw.
3. Proceed with installation outlined below.



Installation With Flex Bracket

1. Cut the tether attached to the Flex Bracket and gently pull port tube through hole. Image shows ceiling view.
2. Remove tether and foam insert.
3. Connect the VPBPC4R or VPBPC6R to the port tube and secure with supplied hose clamp.
4. Place unit into ceiling, tighten toggle feet with low torque drill settings.
5. Attach grille.

LIMITED LIFETIME WARRANTY

Sonance warrants to the first end-user purchaser that this Sonance-brand product ("Product"), when purchased from an authorized Sonance Dealer/Distributor, will be free from defective workmanship and materials for the life of the Product, except for the grille, which is warranted for five (5) years. Sonance will at its option and expense either repair the defect or replace the Product with a new or remanufactured Product or a reasonable equivalent.