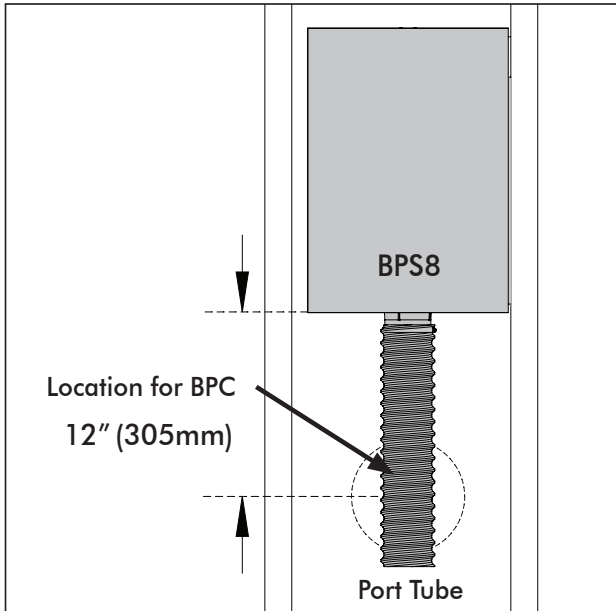


VISUAL PERFORMANCE[®]

VPBPC4R & VPBPC6R QUICKSTART GUIDE



Installation Without Flex Bracket

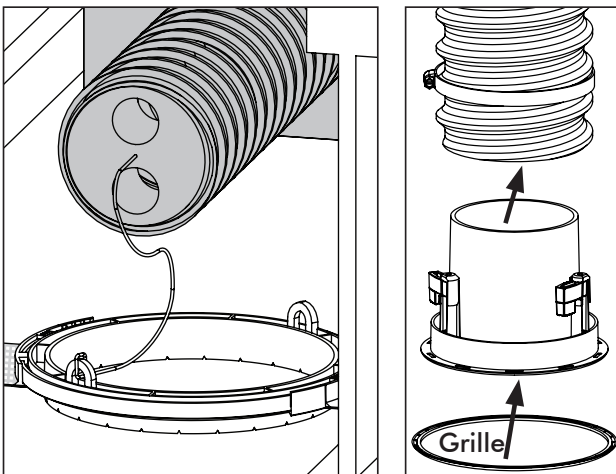
1. Position the cutout template at BPS8 port tube location, then pencil an outline on the ceiling.

NOTE: 12" rule on diagram. This ensures that there is ample hose length available in the ceiling for bandpass connector installation. If 12" rule cannot be maintained the port tube will need to be shortened to maintain angle of tube.

2. Cut the mounting hole using a keyhole or drywall saw.
3. Proceed with installation outlined below.

Installation With Flex Bracket

1. Cut the tether attached to the flex bracket and gently pull port tube through hole. Image shows ceiling view.
2. Pull port tube down and expose all extra port tube through speaker opening. Remove foam insert from port tube. Cut and remove extra port tube material, leaving 3 ribs or 1 5/8" (41mm) below ceiling surface.
3. Connect the VPBPC4R or VPBPC6R to the port tube and secure with supplied hose clamp.
4. Place unit into ceiling, tighten toggle feet with low torque drill settings.
5. The leveling ring is for fine adjustment. If necessary adjust the magnetic grille leveling ring with a screwdriver so grille installs flush to the ceiling surface. Remove the scrim cloth (for BPS8 Subwoofer applications) and install the grille.
NOTE: See grille painting instructions.



LIMITED LIFETIME WARRANTY

Sonance warrants to the first end-user purchaser that this Sonance-brand product ("Product"), when purchased from an authorized Sonance Dealer/Distributor, will be free from defective workmanship and materials for the life of the Product, except for the grille, which is warranted for five (5) years. Sonance will at its option and expense either repair the defect or replace the Product with a new or remanufactured Product or a reasonable equivalent.