

INSTALLATION MANUAL: ARCHITECTURAL SERIES MOUNTING PLATFORM

DISCRETE OPENING SYSTEM, MEDIUM SPEAKER, BANDPASS SUBWOOFER (BPS6 & BPS8)



NOTE: The process of mounting the platform, prewiring, and installing drywall around the platform are the same for drywall, wood, stone, or any other solid surface installation.

(1) Preparing the Platform for Install

Storing the mounting platform

It's recommended that all materials are kept in their original packaging until just before installation. Store them off the ground in a secure, dry area until they are needed. Keep all materials dry and above freezing. At the time of installation and finishing, all materials must be at a temperature of 55°F (12.8°C) or above.

Cutting the panel bracket

Mounting platforms are designed so that the opening can be positioned anywhere within standard 12" O.C. to 24" O.C. joist spacing. However, many installations will require the panel bracket to be cut to size. The panel is made of 100% pressed gypsum board - it can be cut using the score and snap method or using a circular saw with a fine tooth blade (or table saw). To cut the panel using the score and snap method, first score the panel from the frontside - this may take multiple passes. Next, flip the panel over - face side down - and snap the panel towards the cut line.

Retrofit Enclosures

If using the optional retrofit enclosure for the AS38RS or AS68RS speakers, be sure to attach the enclosure PRIOR to attaching the panel bracket to the joists (see photo 1). You will need to remove and discard the strain relief wire tie in order to attach the enclosure.

PLEASE NOTE: the retrofit enclosure must be added before installing the panel bracket to the ceiling - RETROFIT ENCLOSURES **CANNOT** BE ADDED AFTER THE DRYWALL WORK IS COMPLETE.



(2) Installing the Mounting Platform



Step 1- Fasten

Using three drywall screws per joist, fasten the mounting platform to the framing.

NOTE: if using the platform in conjunction with an AS BPS woofer, be sure to locate the opening of the platform within 12" of the woofer location (see AS BPS woofer instructions)



Step 2 - Support or Trim

Place at least one of the provided patch clips on each of the sides with unsupported drywall. Attach the patch clips to the panel bracket using at least one 1-1/4" drywall screw. Trim off any unsupported drywall that does not have a patch clip attached.

(3) Prewire

If prewiring for AS speaker w/ retrofit enclosure:

Prewire to this location as normal, but be sure to make wire connections on the back of the retrofit enclosure prior to continuing on to the next step. It is highly recommended to attach a strain-relief to the speaker wire to ensure that it stays connected to the terminals during the construction process. Once the drywall work is complete, there is no easy access to the speaker terminals on the back of the retrofit enclosure.



If prewiring for AS speaker:

Prewire to this location as normal. The wire tie on the back of the mounting platform can be used as a strain-relief



If prewiring for ASBPS woofer:

Prewire to the woofer location - use provided strain-relief (see photo 1) and be sure to connect the port tube tether to the wire tie on the back of the mounting platform before proceeding to the next step. (see photo 2 & ASBPS subwoofer instructions)



(4) Installing Drywall around the Platform



Step 1- Fit & Screw

Have the drywall contractor fit & install the drywall around the AS mounting platform being sure to fasten at least one 1-1/4" drywall screw to each patch clip location.



Step 2- Snap

After all drywall has been hung and patch clips are fastened, snap off the patch clip tabs as shown above using a pair of pliers.

This section will detail the next portion of the install process for drywall applications only including mudding the panel, sanding the panel, and painting the walls.

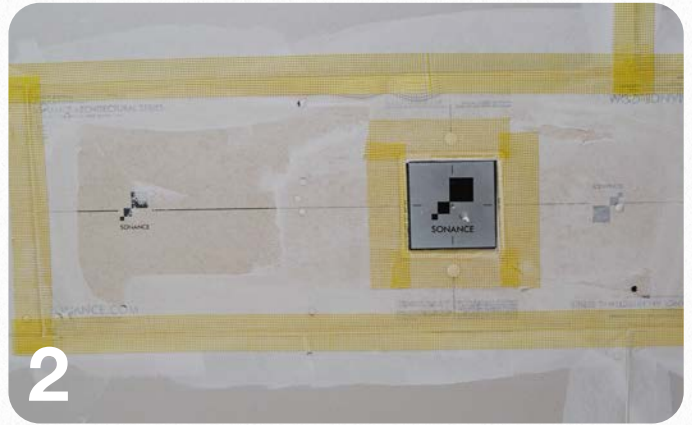
(1) Mudding the Panel

Below are the steps required in order to achieve a level 5 smooth wall/ceiling finish on an Architectural Series mounting platform. If a ceiling with Architectural Series is specified with less than a level 5 finish, it is highly recommended that the specification for that wall be changed to level 5. For more information about the different levels of drywall finishes visit the USG website (<http://www.usg.com/documents/construction-handbook/chapter5.pdf>)



Step 1- Fill

Before applying mud, be sure that the sanding shield is still in place securing in the speaker opening. Using quick-set compound, fill all gaps and let fully cure.



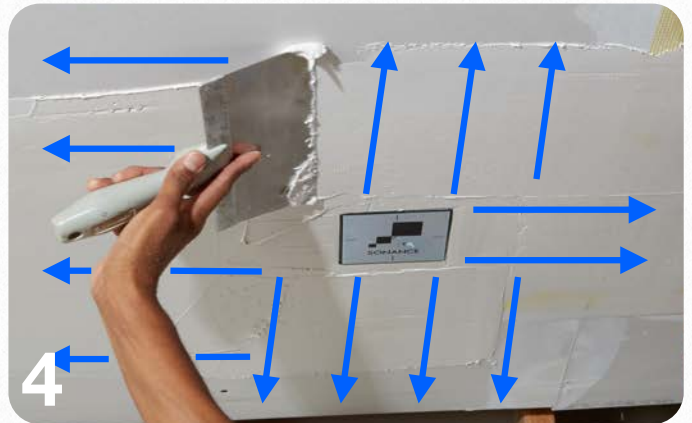
Step 2- Tape

Using mesh tape, apply tape around all adjoining surfaces. This includes areas around the mounting platform and around the speaker opening as shown in the photo above.



Step 3- 1st Coat Mud

Coat the tape and entire Mounting Platform with joint compound. This ensures all pits and valleys have been filled. Before fully cured scrape off any raised portions. Let mud fully cure. NOTE: this coat is a very thin layer. DO NOT build the first layer of mud to the top of the mud dam.



Step 4- 2nd Coat Mud

Next, cover the entire 1st coat with another layer of mud being sure to work from the opening and pulling outward towards the perimeter. This coat will cover the entire 1st coat area plus even more to create a smooth transition. Again, this coat should not reach the top of the mud dam. It should be very thin. Let mud fully cure but DO NOT SAND.

(2) Mudding the Panel (cont.)



Step 5- 3rd & 4th Coat Mud

Continue to build coats three and four in a similar fashion. Build upon the previous layer and expanding the mud perimeter over the previous layer's perimeter. On the 4th and final coat, be sure to completely cover the sanding shield with mud as demonstrated above. Allow this coat to dry. This will be the last and final coat before sanding.

(3) Sanding



Step 1- Sand

Using a sanding pole with a 60 micron film, sand the drywall and the opening until the entire perimeter of the sanding shield is exposed. It is important to use a firm sanding tool, a sanding sponge will cause "dishing" around the opening.



Step 2- Check

Check that there is a well defined edge around the entire perimeter of the sanding shield and feel the area around the speaker opening. The sanding shield should not be raised in comparison to the surrounding compound. The sanding shield and drywall compound should be completely flush and drywall should be smooth.



Step 3- Pull

Once the sanding is complete, push firmly on the sanding shield to break any adhesion to surrounding surfaces. Next, remove the screw in the center of the shield. Then remove the shield using a screw and a pair of pliers or a slotted screw driver.

(4) Wall Painting



Step 1- Clean & Check

Before painting the surface, it's important to make sure the provided paint shield is still in place. This shield provides for a precise and easy way to mask the opening. First, make sure the opening is completely free of excess drywall mud and debris. NOTE: no additional masking tape is needed over the paint shield. Once the painting is complete, it will be discarded.



Step 2- Paint

Painting a wall/ceiling with Architectural Series openings is no different than painting any other drywall surface. The paint can be rolled directly over the openings - cutting around with a brush is not necessary. Before the paint is completely dry, it is a good idea to clean-up the area inside the mud dam using a dry mini roller (1") or a dry paintbrush. Simply roll the roller or run the paintbrush around the mud dam edge to help prevent any unnecessary build-up, or drips around the opening.