

VISUAL PERFORMANCE® SERIES

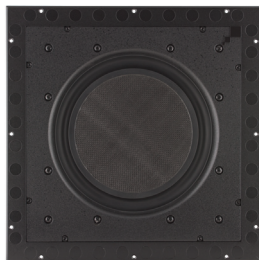
VP10SUB, VP10SUB AMP



Product Family Overview

From the company that invented the category, comes the **BEST SOUNDING**, best looking and most complete range of in-wall and in-ceiling speakers ever. Visual Performance® Series

comes in various shapes and sizes to compliment down lights and décor and a complete range that allows you to enjoy a consistent aesthetic for any application in any room.



VP10SUB



VP10SUB AMP

Features and Benefits

VP10SUB In-Wall subwoofer combines elegant, modern visual design with uncompromised bass performance for home theaters and multimedia solutions. The integrated cabinet design is only 3 7/8" (98mm) deep allowing it to be mounted directly into a 15" x 15" (381mm x 381mm) cutout in a standard 2 x 4 stud bay.

- VP10SUB design allows to fit directly into a drywall cutout or recess in a concrete or brick wall
- VP10SUB features an innovative low profile driver with an ultra low distortion motor, 4" diameter voice coil and dual spiders to optimize the performance of the laminated carbon fiber honeycomb woofer

- The VP10SUB extends down to 34Hz using the matching VP10SUB Amplifier and is capable of producing 105dB of output at one meter with one subwoofer and 110dB of output at one meter with two subwoofers
- The outboard VP10SUB amplifier features a Class D output stage, line, and speaker level high pass filtering and is designed specifically to the VP10SUB. Each amplifier is capable of driving up to two subwoofers

Subwoofer Features

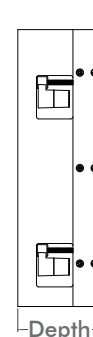
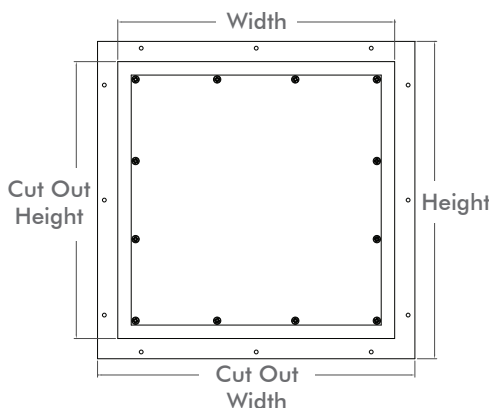
- Low profile driver
- 1.5" of peak to peak travel
- Ultra low distortion motor
- 4" diameter voice coil
- Dual spiders
- Laminated carbon fiber honeycomb cone
- Die-cast basket
- Visual Performance grille
- Integrated Cabinet

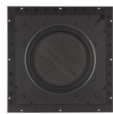
Specifications

Width:	15" (381mm)
Height:	15" (381mm)
Depth:	3 7/8" (98mm)
Cut Out Width:	12 3/4" (324mm)
Cut Out Height:	12 3/4" (324mm)

Sonance Digital Amplifier

- Capable of driving two subwoofers
- Class D output stage
- Line and speaker level high pass filtering
- Designed specifically for the VP10SUB





SPECIFICATIONS

VP10SUB

SKU	92951
UOM	Each
Woofer	10" (254mm) laminated carbon fiber cone with a rubber surround
Frequency Response	34Hz - 250Hz \pm 3dB
Impedance	8 ohms nominal
Requirement	Requires Cinema SUB 10-250 amplifier, sold separately
Sensitivity	90dB SPL (2.83v/1 meter)
Grille	Perforated steel
Dimensions (W x H x D)	15" x 15" x 3 7/8" (381mm x 381mm x 98mm)
Cut-Out Dimensions (W x H x D)	12 3/4" x 12 3/4" (324mm x 324mm)
Shipping Weight	13 lbs (6kg) each



SPECIFICATIONS

VP10SUB AMP

SKU	92952 (120V) 92953 (230V)
UOM	Each
Output Power RMS:	230 Watts @ 8 ohms (1% THD, 32hz) 370 Watts @ 4 ohms (1% THD, 32hz)
Output Power Peak:	260 Watts @ 8 ohms (7% THD, 32hz) 470 Watts @ 4 ohms (8% THD, 32hz)
AC Fuse:	120v Model - 8 amp (T8A - 250V) 230v Model - 6.3 amp (T6.3A - 250V)
AC Power Consumption:	588w @ 4 ohms (sine wave, full power) 396w @ 4 ohms (music, full power)
Heat Output:	102 BTU/HR @ 8 ohms (music, full power) 183 BTU/HR @ 4 ohms (music, full power)
Signal-to-Noise Ratio:	-95dB (w/ 22kHz A-wtg. Filter)
Line Input Impedance:	600 ohms
Line Output Impedance:	600 ohms
Auto-On Trigger Sensitivity:	7.0mV LFE Line Input 3.5mV Stereo Line Input
Low-Pass Crossover Freq:	(BYPASS Switch OFF): 50Hz ~ 150Hz (variable), 12dB/octave (BYPASS Switch ON): 250Hz (fixed), 12dB/octave
Hi Level Out Hi-Pass Filter:	-3dB @ 150Hz, 6dB/octave
Line Level Out Hi-Pass Filter:	-3dB @ 150Hz, 6dB/octave
Controls:	Variable crossover freq and output level, Phase switch, Bypass switch
Dimensions (WxHxD):	16 3/4" x 3 7/8" x 13 1/2" (425mm x 98mm x 343mm)
RMF Dimensions (WxHxD):	19" x 3 7/8" x 13 1/2" (483mm x 98mm x 343mm)
Rack Space Requirement:	2U, Rack Ears included
Certifications:	ETL, CE, C-Tick, FCC
Shipping Weight:	19 lbs (8.6kg) each

VP10SUB LIMITED LIFETIME WARRANTY

Sonance warrants to the first end-user purchaser that this Sonance-brand product ("Product"), when purchased from an authorized Sonance Dealer/Distributor, will be free from defective workmanship and materials for the life of the Product, except for the grille, which is warranted for five (5) years. Sonance will at its option and expense either repair the defect or replace the Product with a new or remanufactured Product or a reasonable equivalent.

VP10SUB AMPLIFIER LIMITED FIVE (5) YEAR WARRANTY

Sonance warrants to the first end-user purchaser that this Sonance-brand product ("Product"), when purchased from an authorized Sonance Dealer/Distributor, will be free from defective workmanship and materials for the life of the Product, except for the grille, which is warranted for five (5) years. Sonance will at its option and expense either repair the defect or replace the Product with a new or remanufactured Product or a reasonable equivalent.

Please visit our website and owner's e-Manual for complete warranty and exclusion information.



SONANCE®

©2013 Sonance. All rights reserved.

Sonance, Visual Performance and Roto-Lock, are registered trademarks of Dana Innovations.

Due to continuous product improvement, all features and specifications are subject to change without notice.

For the latest Sonance product specification information visit our website: www.sonance.com

SONANCE • 212 Avenida Fabricante • San Clemente, CA 92672-7531 USA

(800) 582-7777 or (949) 492-7777 • FAX: (949) 361-5151 • Technical Support: (800) 582-0772

www.sonance.com