

FIRMWARE INSTALLATION M A N U A L

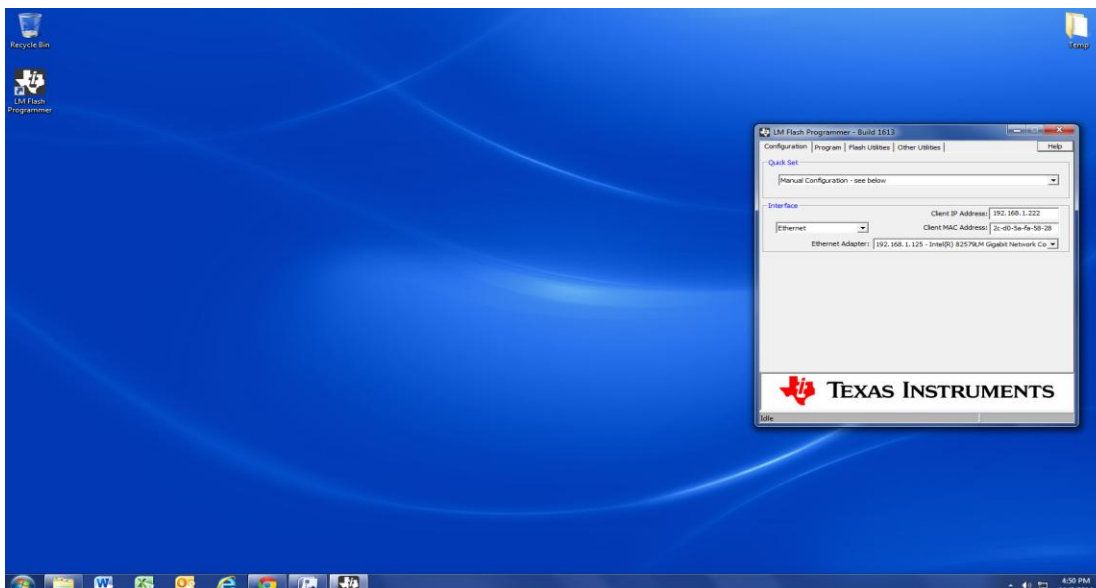
SONANCE DSP2-150 AMPLIFIER

SONANCE DSP8-130 AMPLIFIER

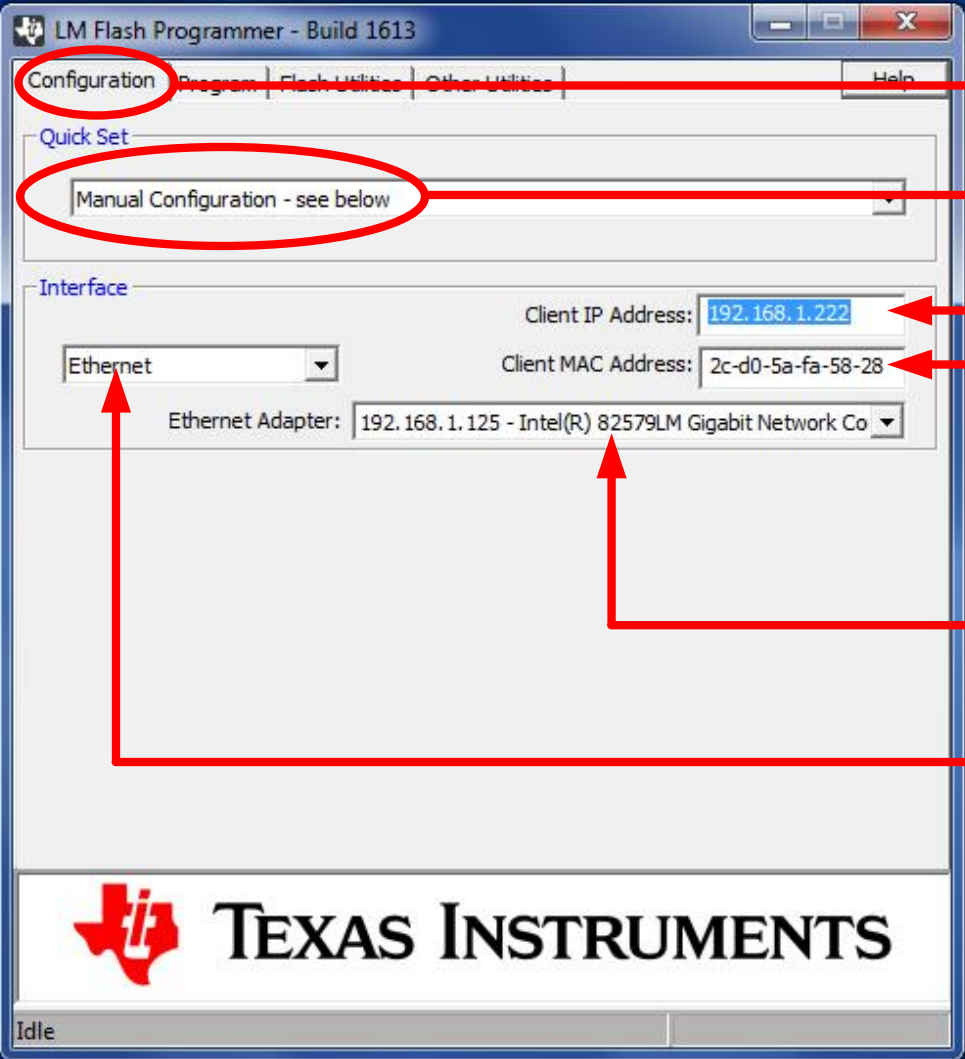
SONANCE DSP2-750 AMPLIFIER

You will need a computer running Windows 7,8.1, or 10 to update the firmware on your amplifier.

1. Install the LM Flash Programmer software on your computer.
2. **DO NOT ATTEMPT TO USE WIFI.** Connect your computer to the same network as the amplifier. THE AMPLIFIER AND COMPUTER MUST BE CONNECTED WITH A CABLE TO THE ROUTER / NETWORK.
3. Using the ALL PRESETS EXPORT function on the EQ Setting tab, export your complete DSP library to a location you will be able to find later.
(When the firmware update loads, it will overwrite the DSP library and all settings will be lost!)
4. Using the All Setting Backup function on the General Settings tab, save any amp settings to a location you will be able to find later.
5. Make sure the amplifier to be updated is powered on. Use a network scanner to find the amplifier's IP address on the network. Make note of this address.
6. Launch the LM Flash Programmer software



7. Duplicate the settings shown below in the LM Flash software:



The screenshot shows the LM Flash Programmer - Build 1613 window. The 'Configuration' tab is selected. Under 'Quick Set', 'Manual Configuration - see below' is chosen. In the 'Interface' section, 'Ethernet' is selected from the drop-down menu. The 'Client IP Address' is set to 192.168.1.222, and the 'Client MAC Address' is set to 2c-d0-5a-fa-58-28. The 'Ethernet Adapter' is listed as 192.168.1.125 - Intel(R) 82579LM Gigabit Network Co. Red arrows point from the text instructions to these specific fields.

Select the Configuration tab.

Set to Manual.


Enter Amplifier IP Address

Enter this MAC Address:
2c-d0-5a-fa-58-28

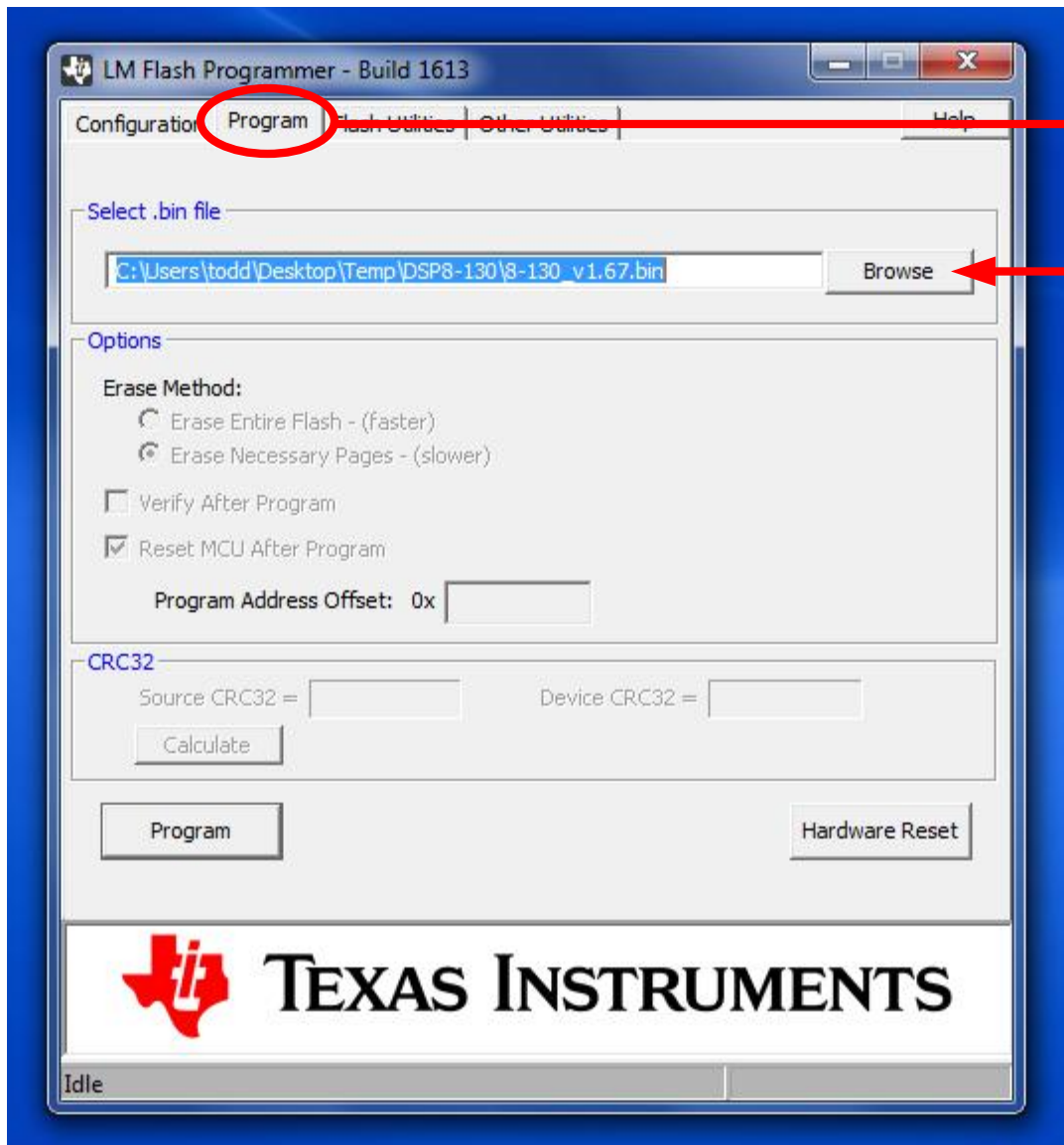
**Note: DO NOT ENTER THE
MAC ADDRESS OF THE
AMPLIFIER!**

Choose the Ethernet card
your computer uses for its
wired network connection.

Select the Ethernet option
from the drop down menu.

 **TEXAS INSTRUMENTS**

Idle

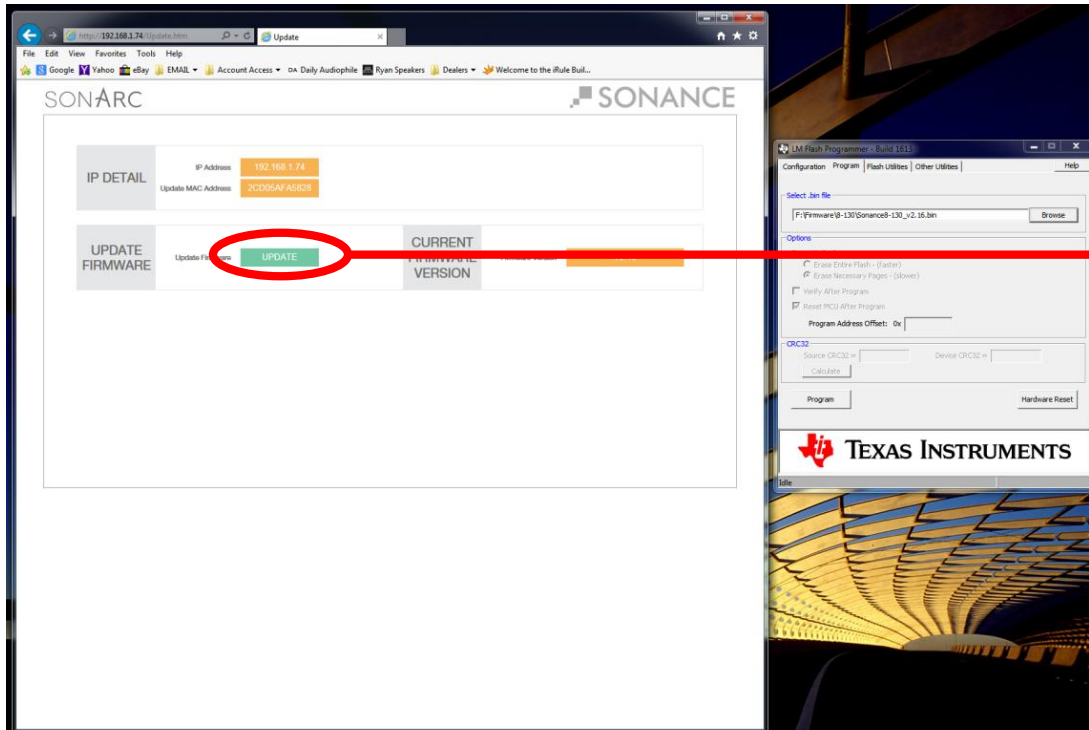


Select the Program tab.

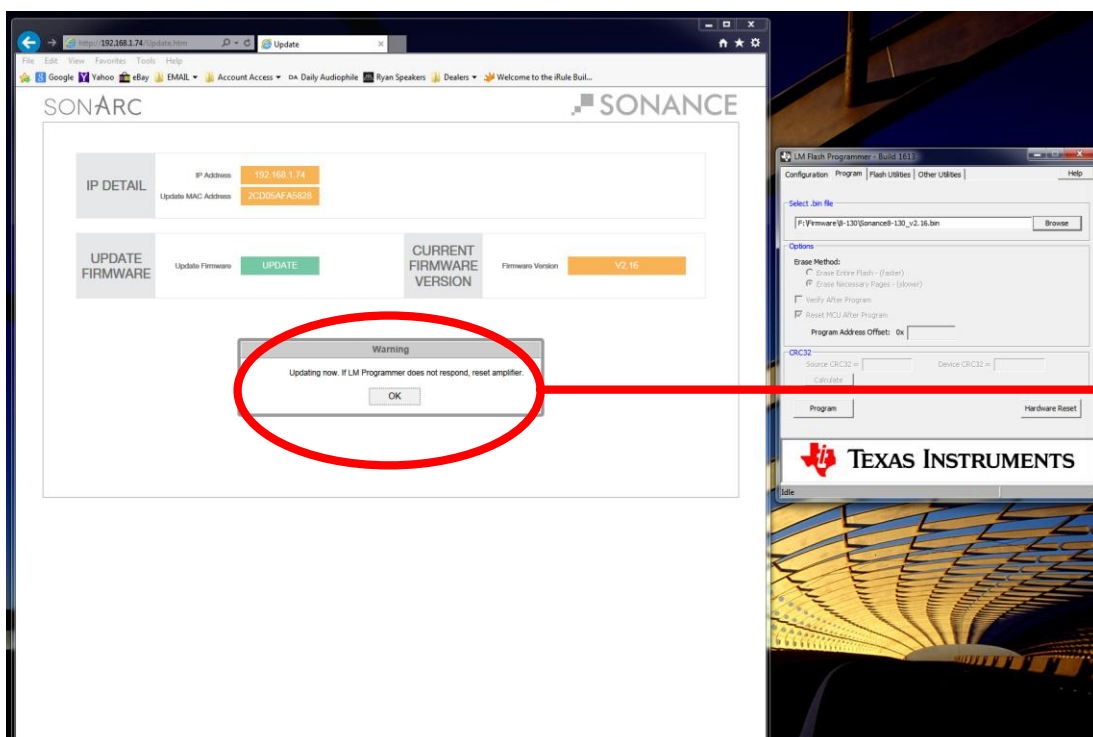
Locate the Sonance
firmware update file.

The file extension is .BIN.

8. Open your web browser (Google Chrome or Internet Explorer).
9. Enter the current IP address for your amplifier in the address bar.
10. Enter the IP address followed by /Update.htm (Note: the "U" must be capitalized).
11. The page below should appear:

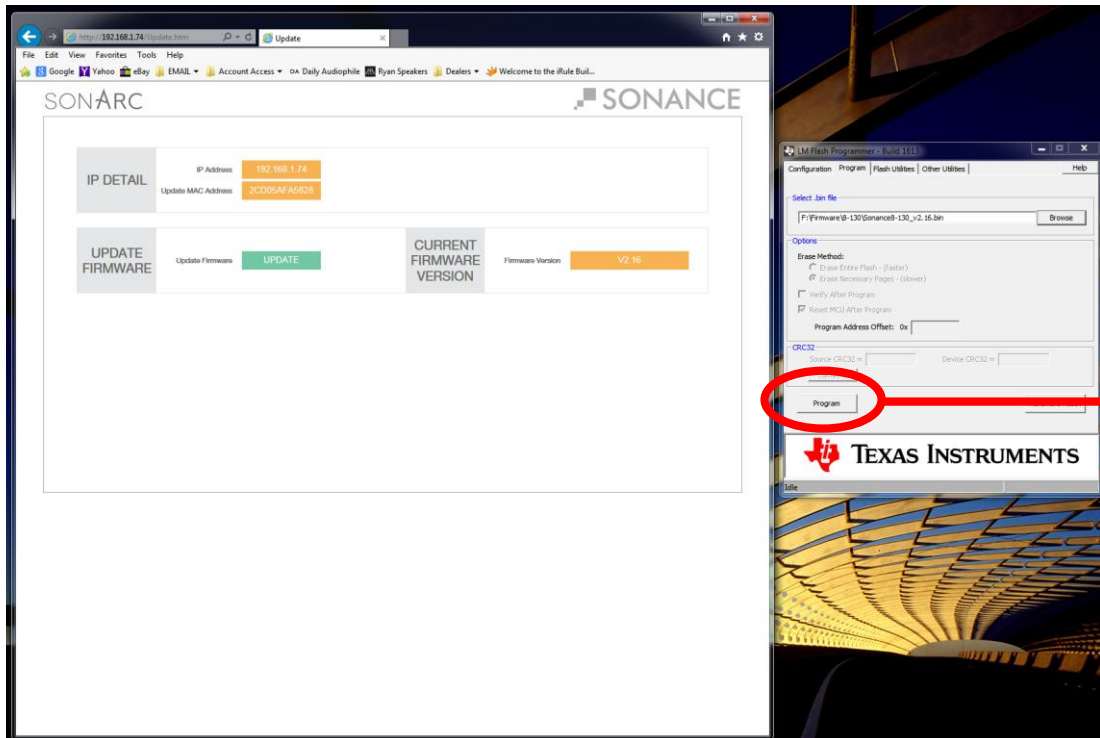


Press the green Update button.

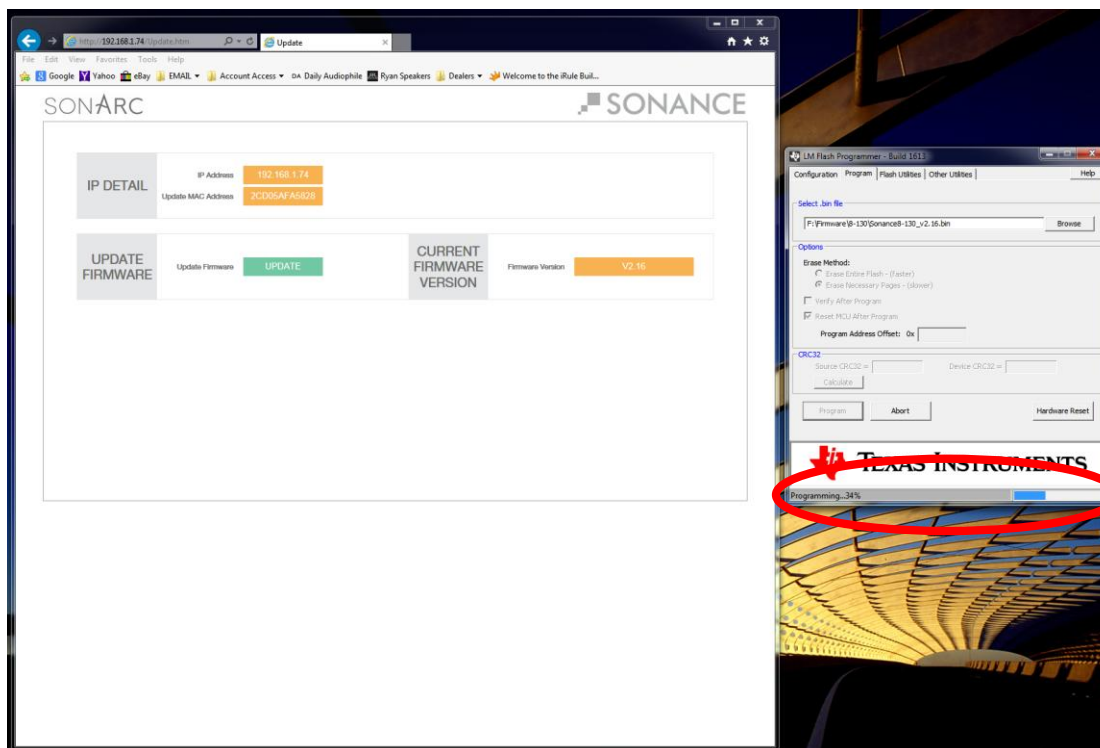


This popup should appear (PUSH OK).

The power button on the amplifier will flash then after a few seconds the white light will go out.



In LM Flash Programmer push the Program button.



The firmware update will begin. The update will take a few seconds to start.

The firmware update process should only take approximately 15 seconds to complete. At the bottom of the LM Flash software the blue progress bar will indicate the percentage complete.

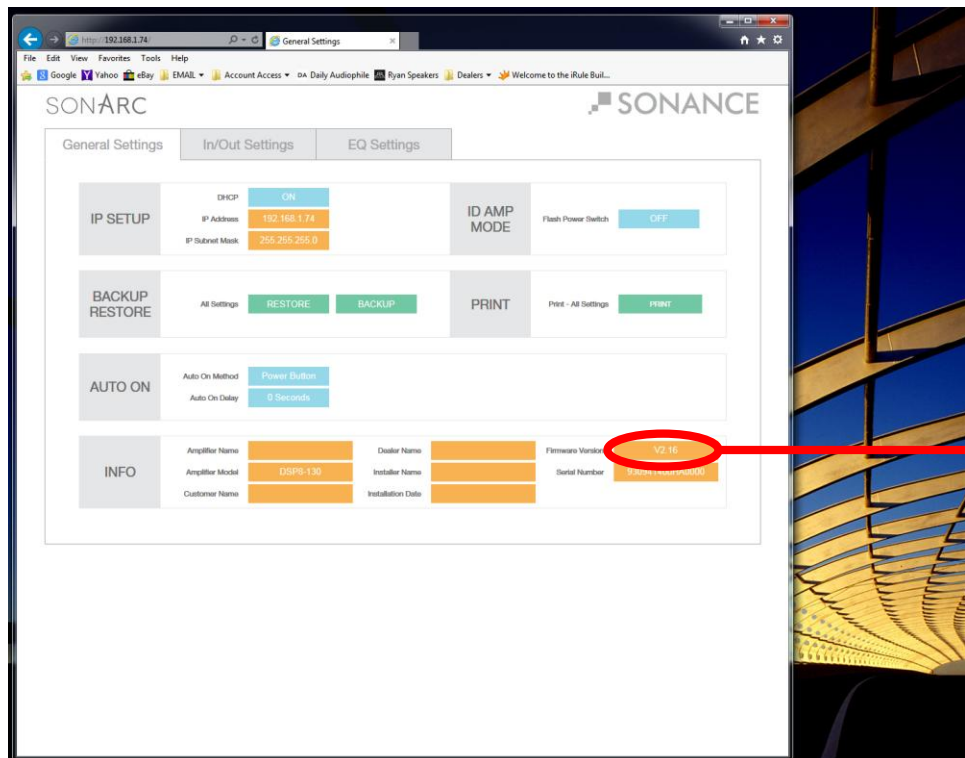
Once the firmware update is complete, the power button will light and the amp will go through its normal turn on sequence.

Do not disconnect power during this startup phase.

Upon completion you may close LM Flash Programmer.

Please Note: DHCP will now be ON so the IP address of the amplifier could have changed. Make note of your IP address or re-scan the network.

14. The General Settings window will appear.



18. To finalize the update please power cycle the amplifier.

Thank you!