

# SONANCE LANDSCAPE SERIES

## HS10SUB HARDSCAPE SUBWOOFER



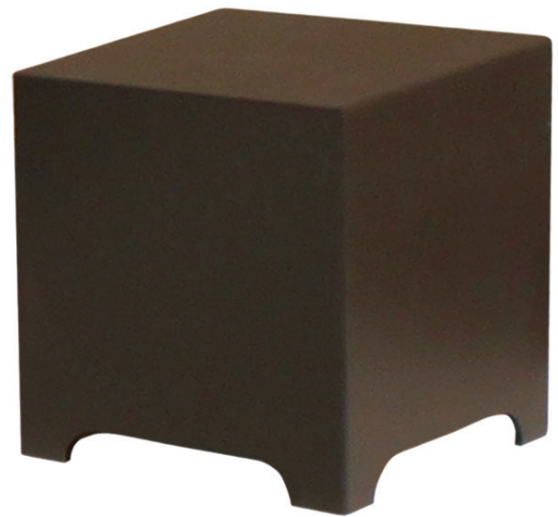
### Product Family Overview

Until now, there have been many challenges in achieving high quality audio in hardscape environments. The new HS10SUB Subwoofer delivers powerful deep bass frequencies that are the foundation of the SLS's remarkable performance. The sealed (HDPVC) enclosure is installed above the ground and incorporated into an acoustically-favorable environment; including being

built into outdoor furniture or underneath vented planter boxes. This unheard of versatility, coupled with unmatched performance, puts the HS10SUB Hardscape Subwoofer in a class unto itself. The HS10SUB is the perfect partner for the LS47SAT Satellite Speakers, delivering high quality, high volume sound that is scalable for even the largest space.

### Features and Benefits

- Part of a scalable system that delivers perfectly even coverage and unequalled sonic performance throughout any sized space
- Robust construction designed to handle the most extreme conditions
- Tuned port / deep, powerful, tight bass
- 10" woofer
- 100 Watt transformer
- Down-firing band-pass design
- (HDPVC) non-corrosive sealed enclosure
- 70 Volt systems allow expandable landscape designs

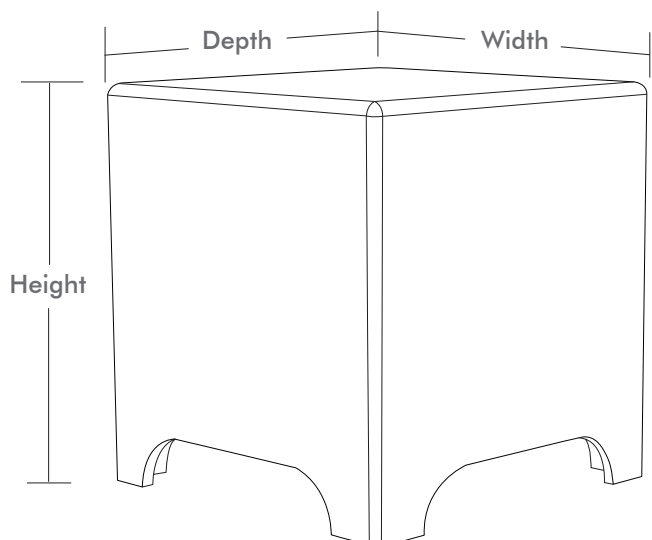


### Dimensions

#### HS10SUB

##### Woofer Enclosure

Length: 13 1/2" (343mm)  
Height: 14" (356mm)  
Depth: 13 1/2" (343mm)



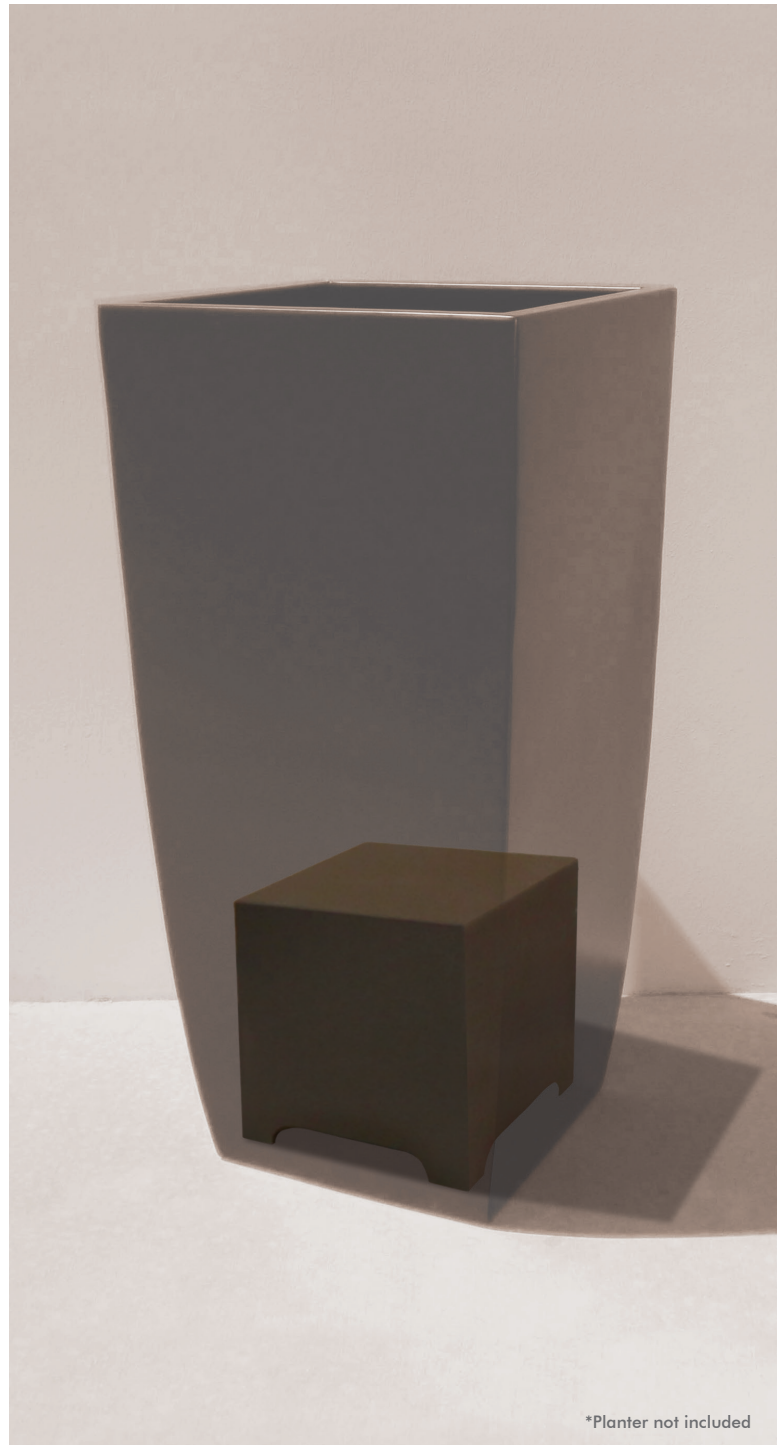
## Specifications



### SPECIFICATIONS

### HS10SUB

SKU	92936
UOM	Each
Woofers	10" (254mm) polypropylene cone with a Santoprene rubber surround
Frequency Response	35Hz – 100Hz ±3dB
Transformer	70V/100 Watts
Enclosure Material	(HD PVC) Non-corrosive sealed enclosure
Finish	Dark brown textured enclosure
Dimensions (L x H x D)	13 1/2" L x 14" H x 13 1/2 D" (343mm x 356mm x 343mm)
Shipping Weight	42 lbs (19 kg)



## LS10SUB Associated Products

Sonamp DSP 2-750 Amplifier 93095   
(Each)

LS47SAT 92934   
(Each)

### LIMITED FIVE (5) YEAR WARRANTY

Sonance warrants to the first end-user purchaser that this Sonance-brand product ("Product"), when purchased from an authorized Sonance Dealer/Distributor, will be free from defective workmanship and materials for the period stated below. Sonance will at its option and expense during the warranty period, either repair the defect or replace the Product with a new or remanufactured Product or a reasonable equivalent. Warranty Period for this Product: Five (5) years from the date on the original sales receipt or invoice or other satisfactory proof of purchase.



©2015 Sonance. All rights reserved.  
Sonance, is a registered trademarks of Dana Innovations.

Due to continuous product improvement, all features and specifications are subject to change without notice.  
For the latest Sonance product specification information visit our website: [www.sonance.com](http://www.sonance.com)

SONANCE • 212 Avenida Fabricante • San Clemente, CA 92672-7531 USA  
(949) 492-7777 • FAX: (949) 361-5151  
[www.sonance](http://www.sonance)