

FIRMWARE INSTALLATION M A N U A L

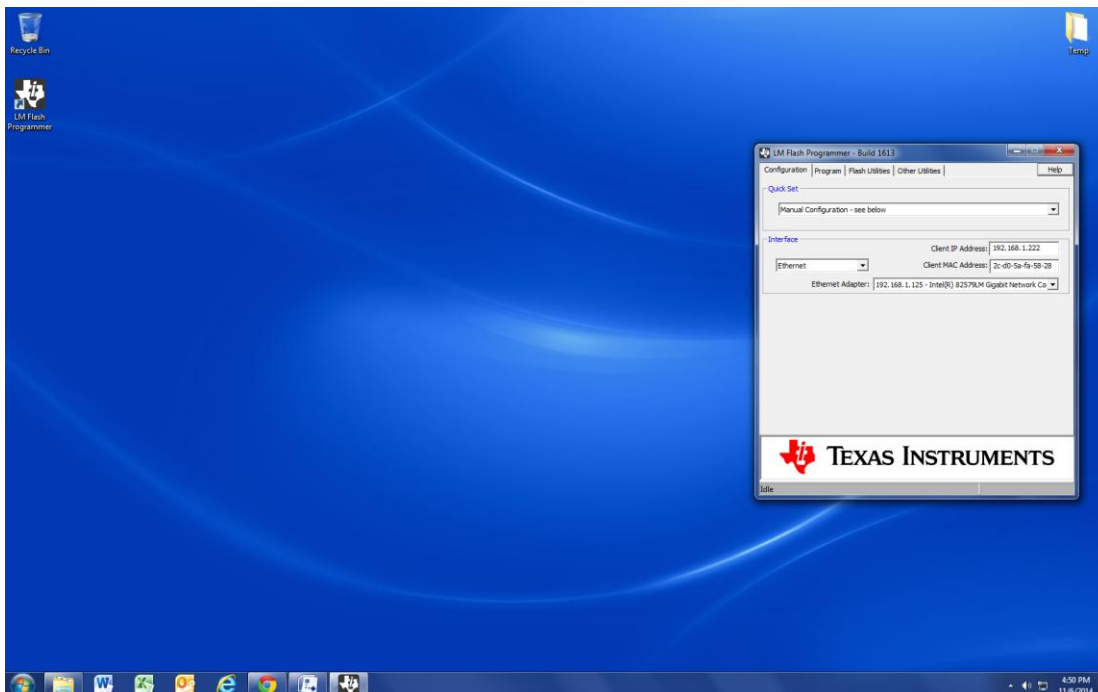
SONANCE DSP2-150 AMPLIFIER

SONANCE DSP8-130 AMPLIFIER

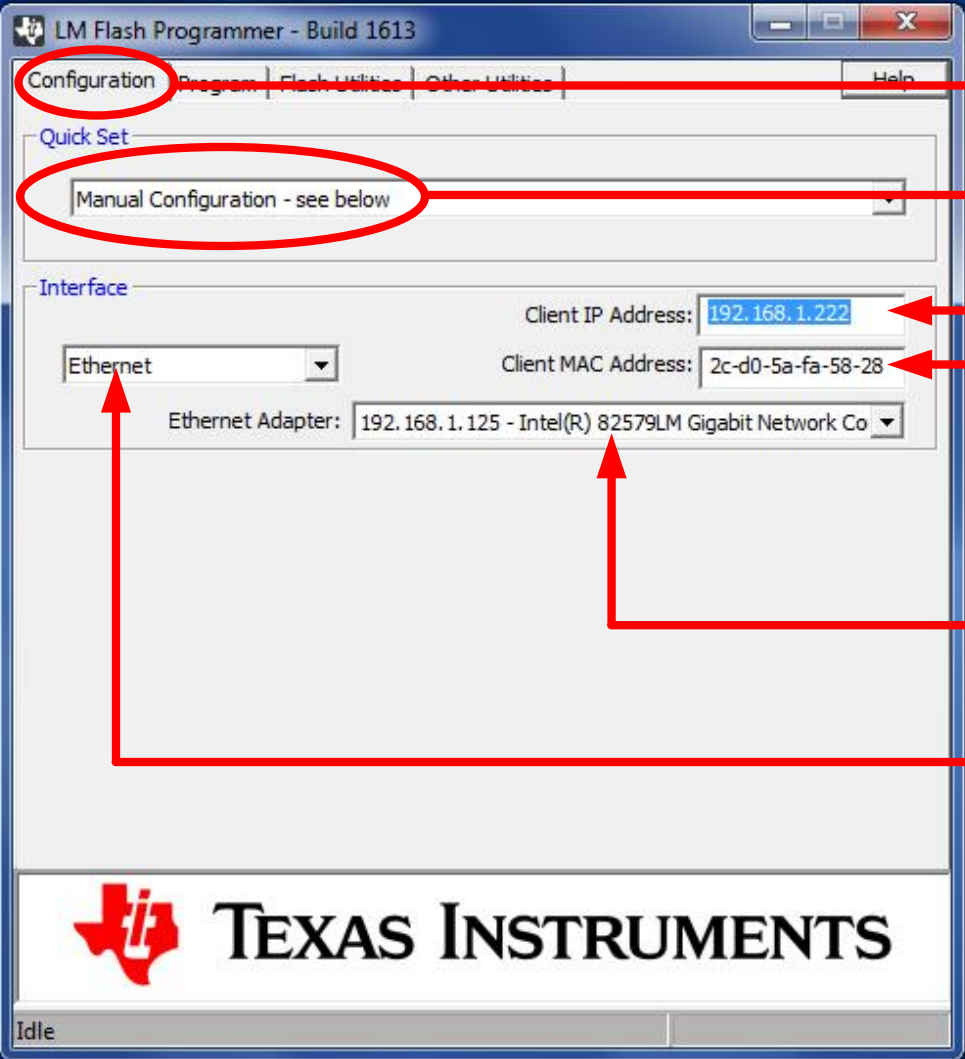
SONANCE DSP2-750 AMPLIFIER

You will need a computer running Windows 7 or 8 to update the firmware on your amplifier.

1. Install the LM Flash Programmer software on your computer
2. Connect your computer to the same network as the amplifier. THE AMPLIFIER AND COMPUTER MUST BE CONNECTED WITH A CABLE TO THE ROUTER / NETWORK. **DO NOT ATTEMPT TO USE WIFI.**
3. Using the EXPORT ALL PRESETS function export your complete DSP library to a location you will be able to find later.
(when the firmware update loads it will overwrite the DSP library and all settings will be lost!)
4. Launch the LM Flash Programmer software:



Duplicate the settings shown below in the LM Flash software:



The screenshot shows the LM Flash Programmer - Build 1613 window. The 'Configuration' tab is selected. Under 'Quick Set', 'Manual Configuration - see below' is chosen. In the 'Interface' section, 'Ethernet' is selected in the drop-down menu. The 'Client IP Address' is set to 192.168.1.222, and the 'Client MAC Address' is set to 2c-d0-5a-fa-58-28. The 'Ethernet Adapter' is listed as 192.168.1.125 - Intel(R) 82579LM Gigabit Network Co. The Texas Instruments logo is at the bottom.

Configuration | Program | Flash Utilities | Other Utilities | Help

Quick Set

Manual Configuration - see below

Interface

Ethernet

Client IP Address: 192.168.1.222

Client MAC Address: 2c-d0-5a-fa-58-28

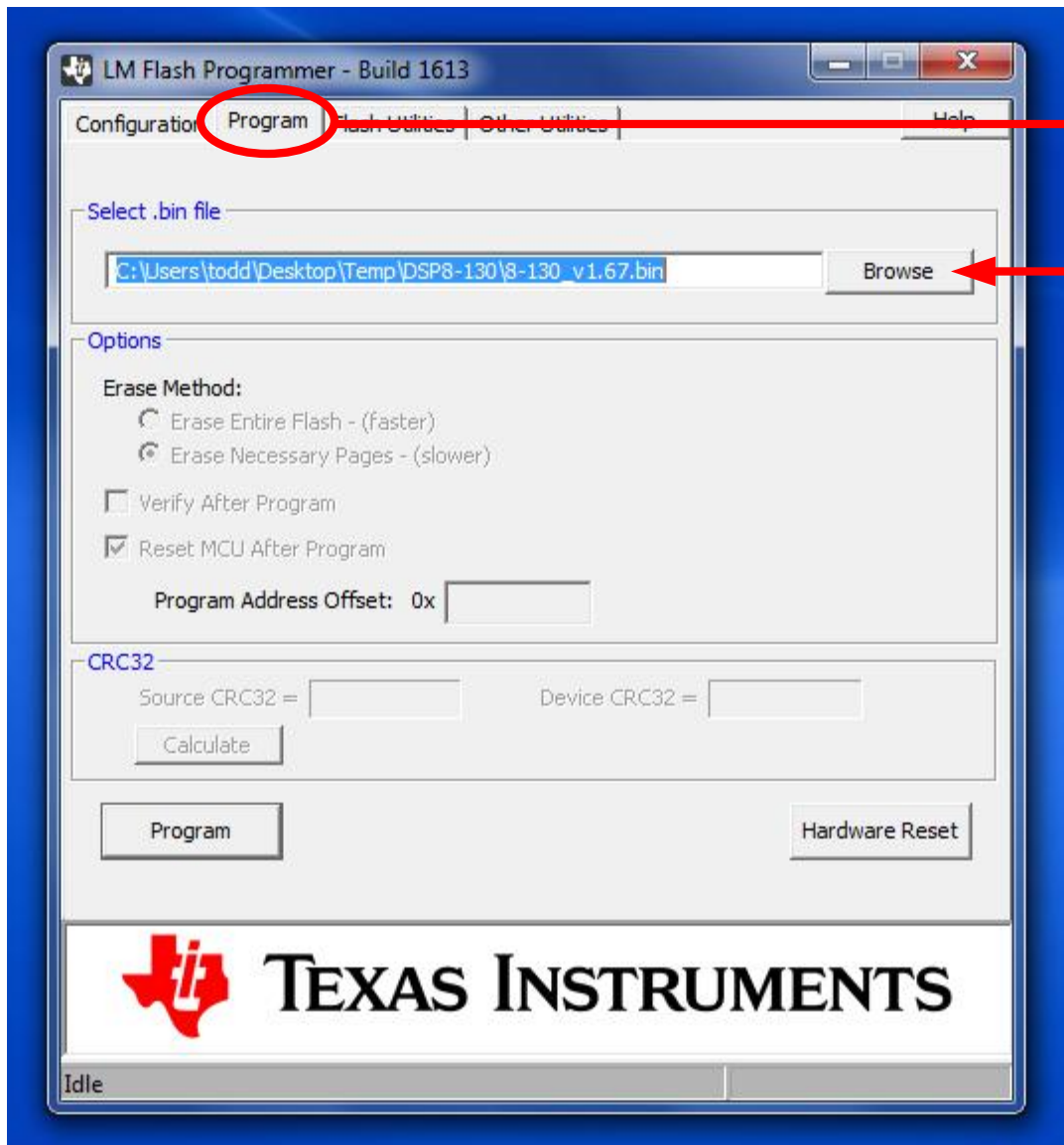
Ethernet Adapter: 192.168.1.125 - Intel(R) 82579LM Gigabit Network Co

Annotations:

- Select the Configuration tab
- Set to Manual
- Enter Amplifier IP Address
- Enter this MAC Address: 2c-d0-5a-fa-58-28
- Note: DO NOT ENTER THE MAC ADDRESS OF THE AMPLIFIER!
- Choose the Ethernet card your computer uses for its wired network connection
- Select the Ethernet option from the drop down menu.

TEXAS INSTRUMENTS

Idle

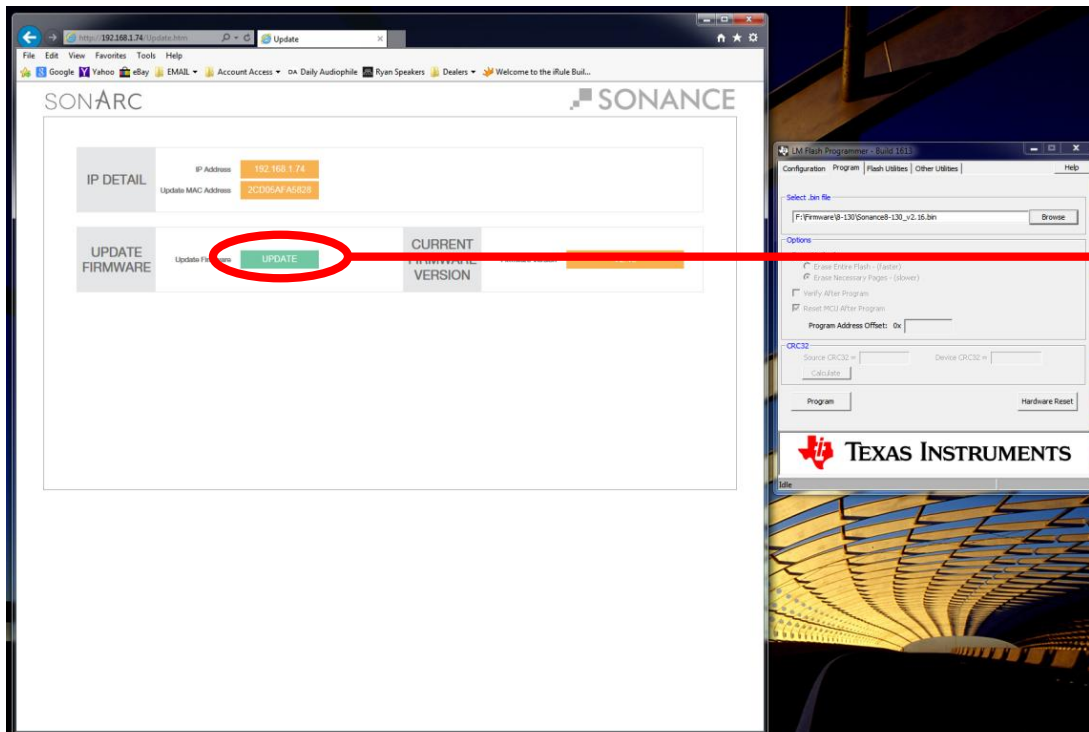


Select the Program Tab

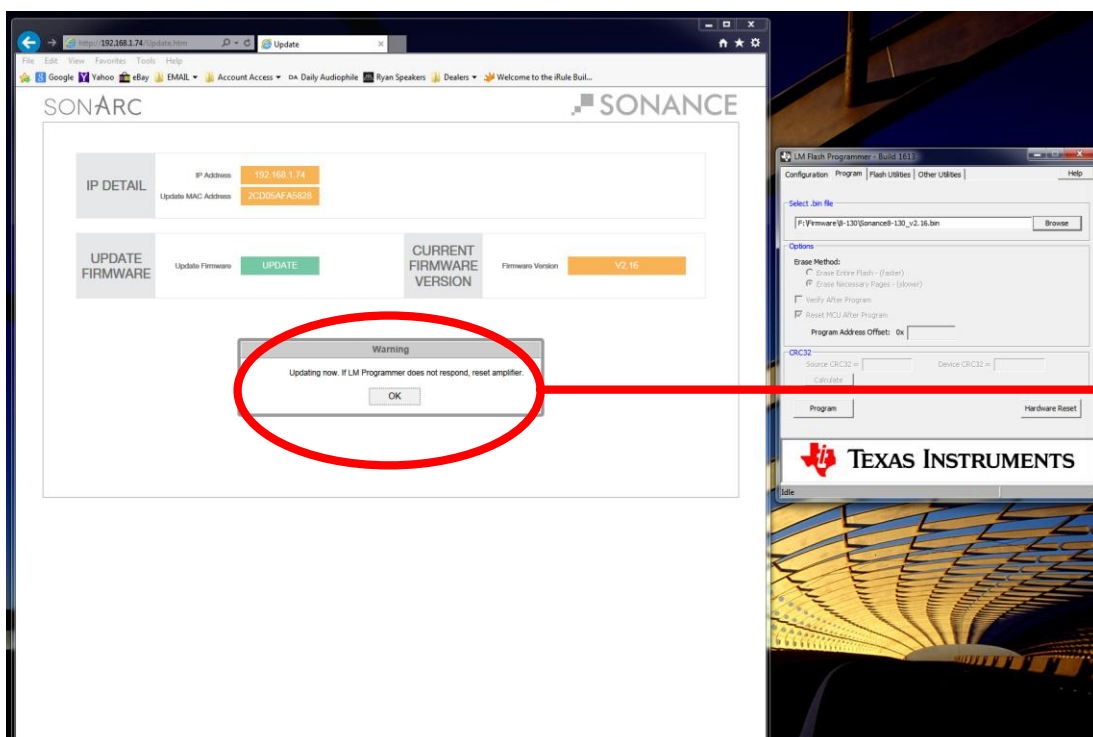
Locate the Sonance
firmware update file.

The file extension is .BIN

1. Open your web browser (Google Chrome or Internet Explorer)
2. Enter the current IP address for your amplifier
3. Enter the IP address followed by /Update.htm
4. The page below should appear:

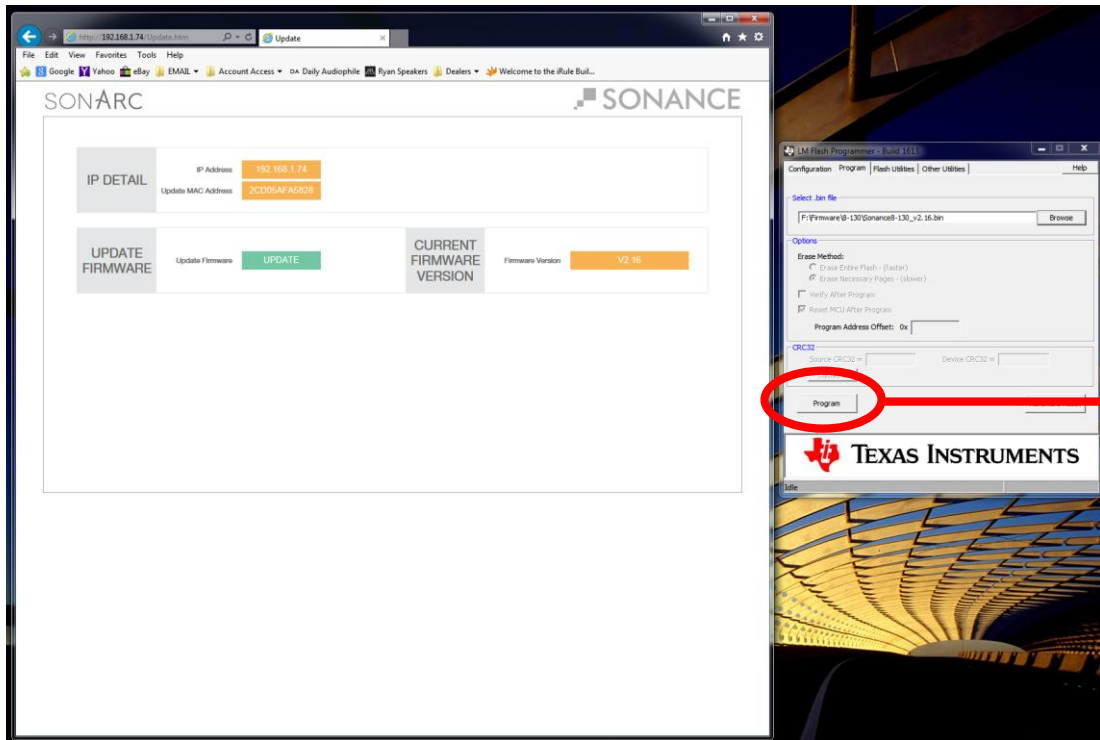


Press the green Update button

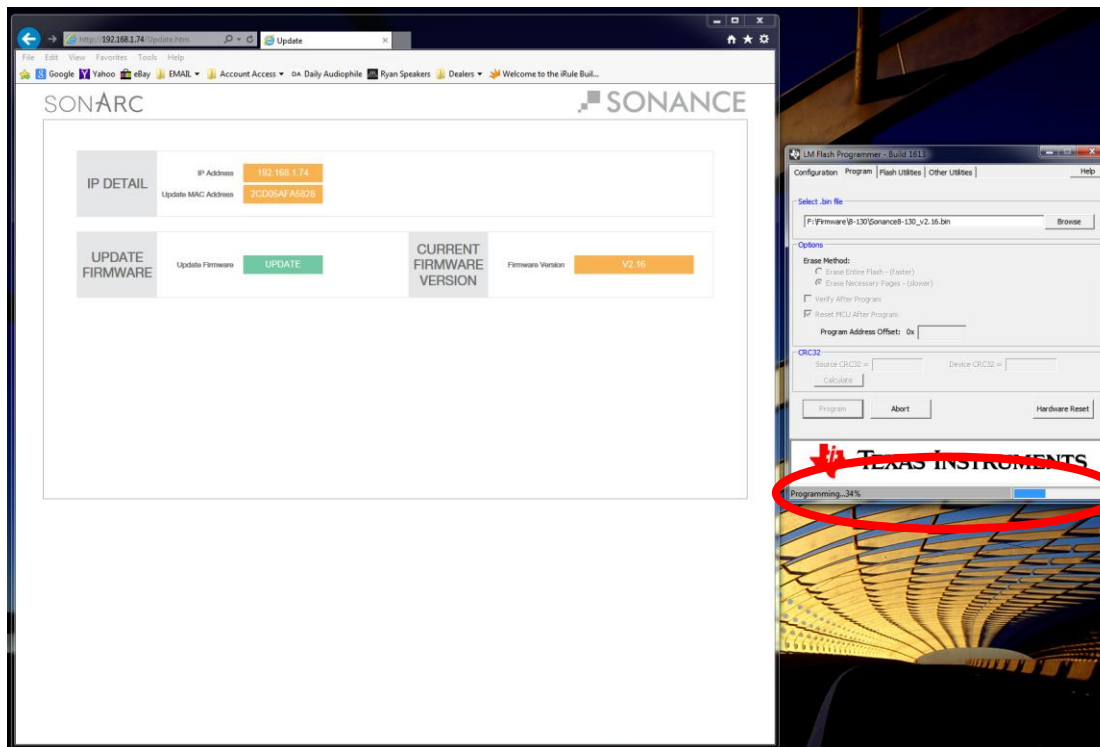


This popup should appear
(PUSH OK)

The power button on the amplifier will flash then after a few seconds the light will go out.



Push the Program button

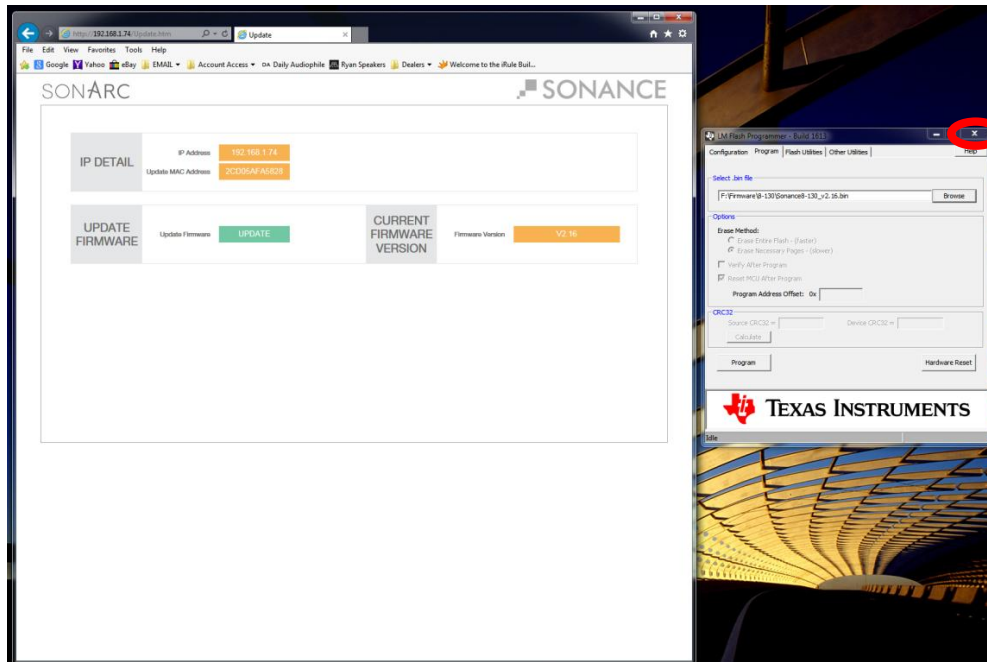


The firmware update will begin. The update will take a few seconds to start.

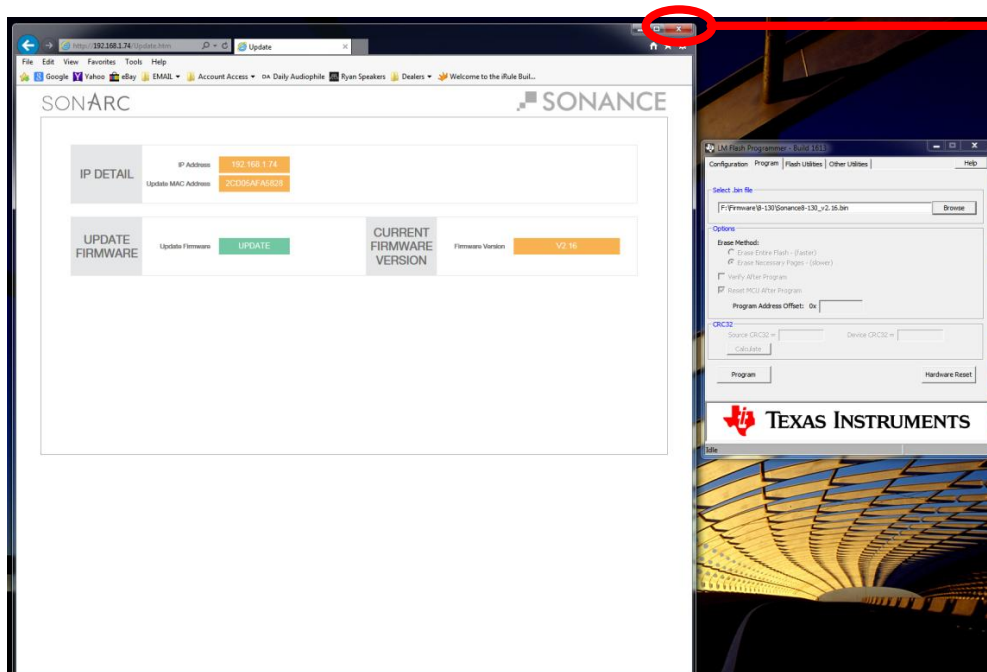
The firmware update process should only take approximately 15 seconds to complete. At the bottom of the LM Flash software the progress bar will indicate the percentage complete.

Once the firmware update is complete the power button will light and the amp will go through its normal turn on sequence.

Please Note: DHCP will now be ON so the IP address of the amplifier could have changed.

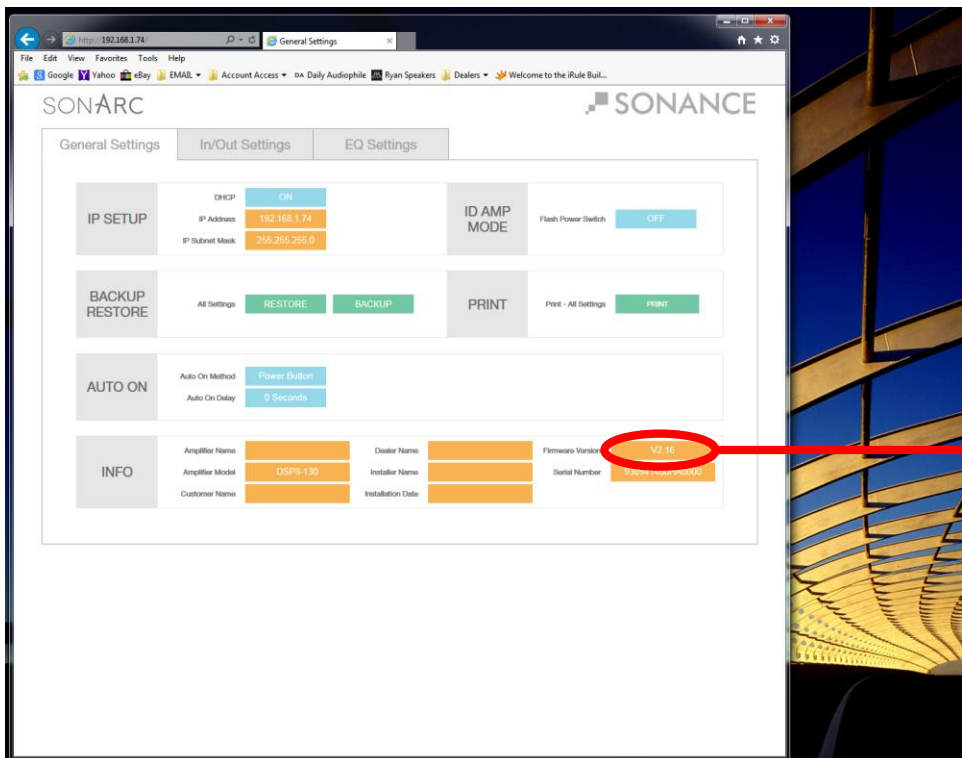


Close LM Flash Programmer



Close your web browser

1. DHCP will now be turned on so you will need find the amplifier in your network places or using IP scanning software.
2. Launch your web browser and enter the IP address of the amplifier.
3. The window below should appear



Your new firmware version should be displayed here.

The firmware has now been successfully updated.

You can now select the EQ Settings tab and reload your DSP preset file.

You can also return the amp to the network settings you were previously using.

Thank you!